

Project Title: Roll Shop Crane Upgrade

Location: Southeastern Michigan

Customer Comments at Completion of Project:

“We are very very pleased with the results. All in all, it was a very good install and your guys were accommodating as well as professional. I look forward to future projects as well!”

General Scope of Work:

1. 10T Capacity Trolley Hoist Unit Replacement
2. Bridge Drive Redesign
3. All new VFD Controls
4. Festoon Replacement
5. Pendant Replacement
6. Radio Installation

Summary of Project:

This project started with the customer calling and stating that the existing trolley motor (2.5hp) had failed and needed replaced. The OEM replacement motor was found to be over \$20,000! We provided the quote for the new motor and also presented the option of a new trolley hoist unit with inverter-duty motors and VFD controls – for the same price. The customer elected to go with the new trolley hoist unit, plus a Magnetek FlexEx2 radio system, a new festoon system, and a new backup pendant festoon system.

As if their luck couldn't get any worse on this crane, the customer reached out to us about 3 weeks before the trolley hoist install stating that the center mounted bridge drive gearbox failed, and the OEM was telling them 8+ week delivery on the replacement unit. We presented the option to redesign the bridge drive system to have 2 Nord gearmotors (1 per drive wheel) controlled by a Magnetek drive. The customer cut us an order to get the engineering completed on an expedited timeline so that we could spec all of the needed controls and drive equipment. In the end, we were able to provide all of the detailed engineered drawings, procure all material, and install everything at the same time as the new trolley hoist unit and additional equipment, during the customer's planned outage.

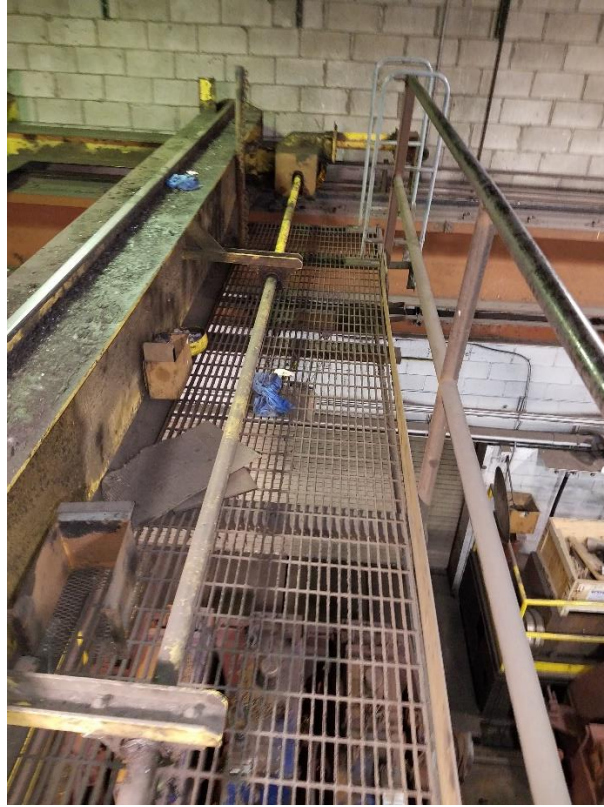
Please see the following pages for before and after pictures, as well as screen shots of a couple of the engineered drawings:

BEFORE Pictures:

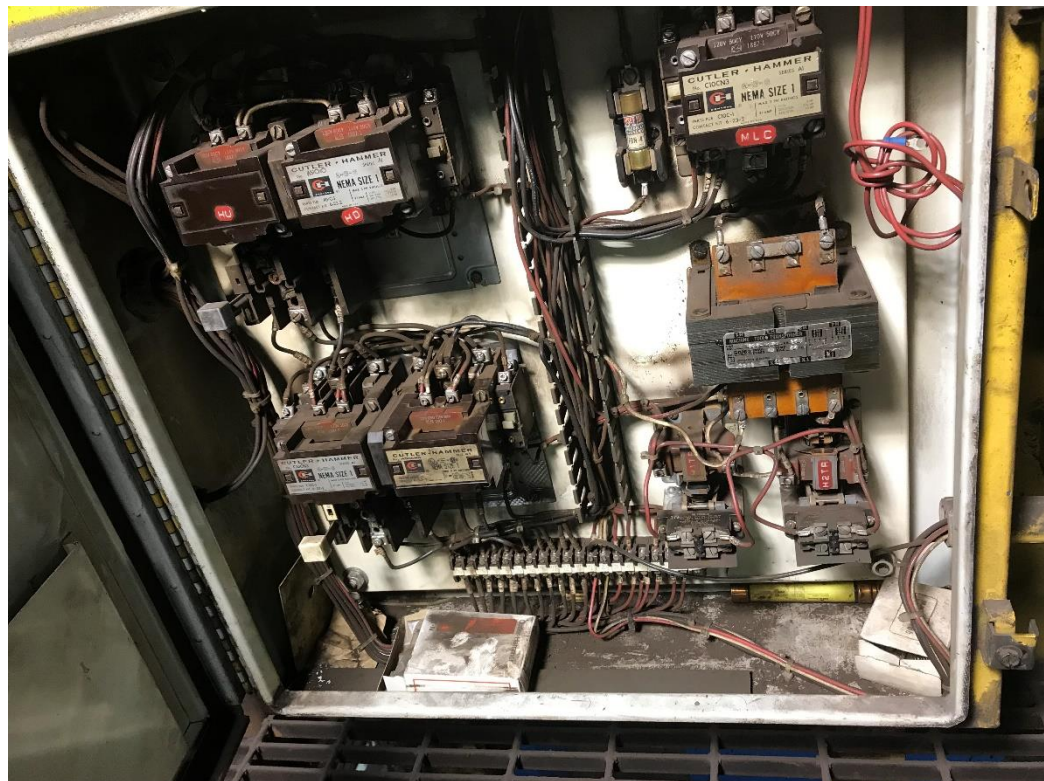
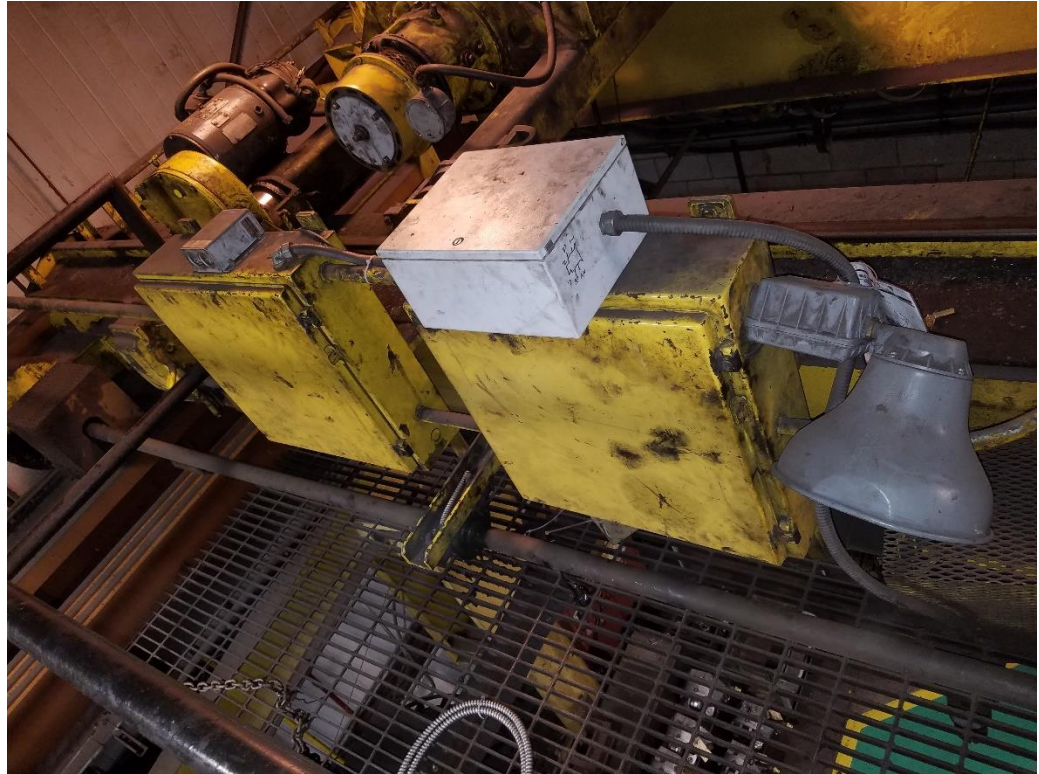
Trolley Hoist Unit

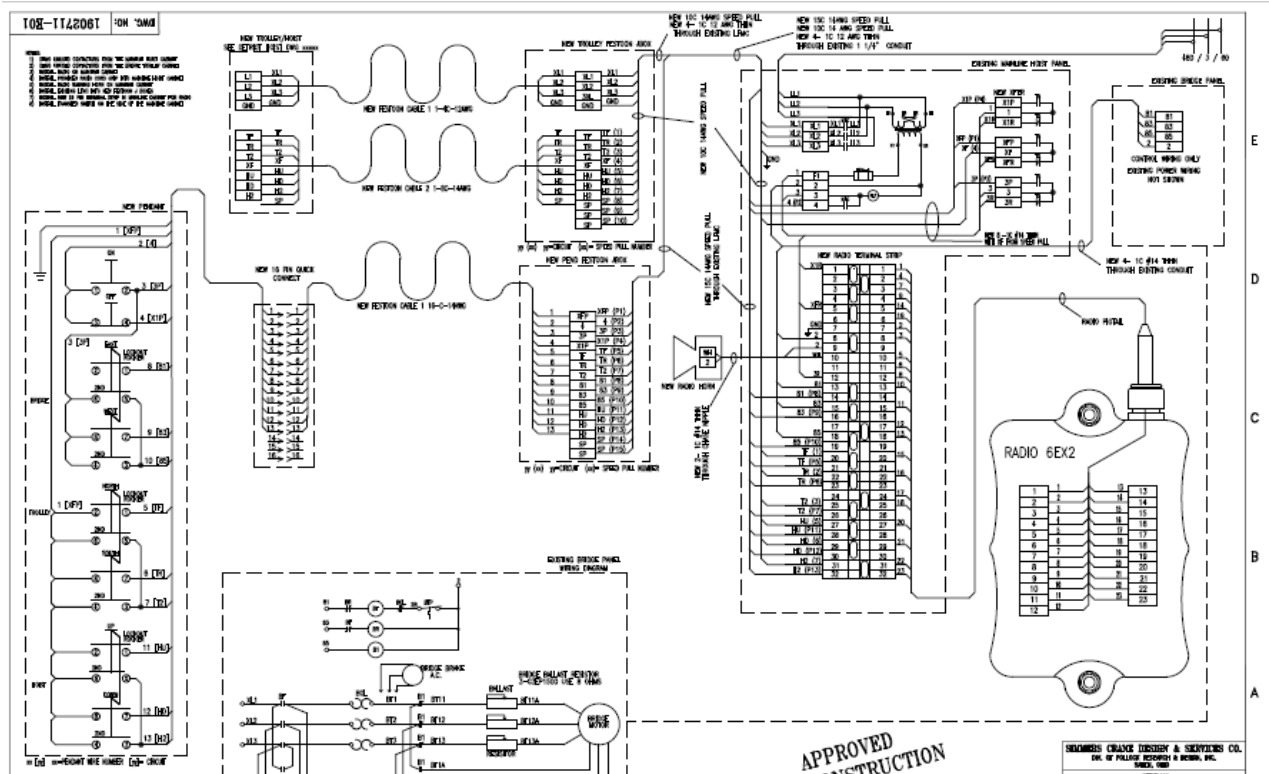
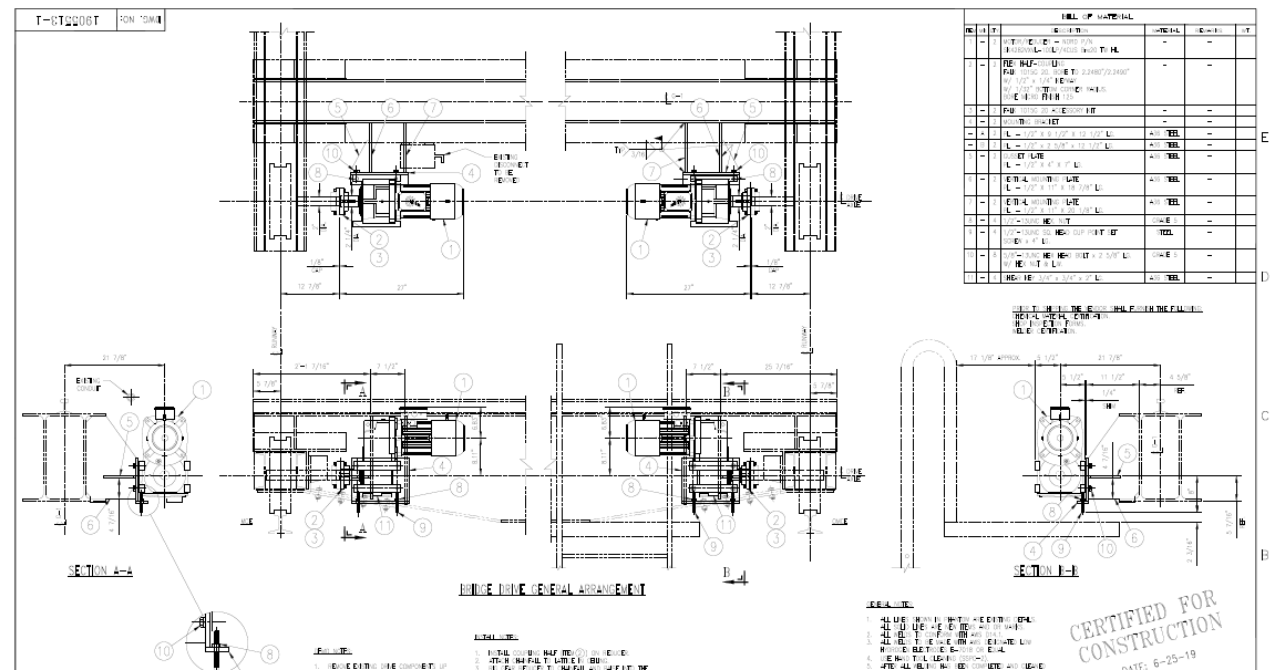


Bridge Drive System



Controls





AFTER Pictures

Trolley Hoist Unit



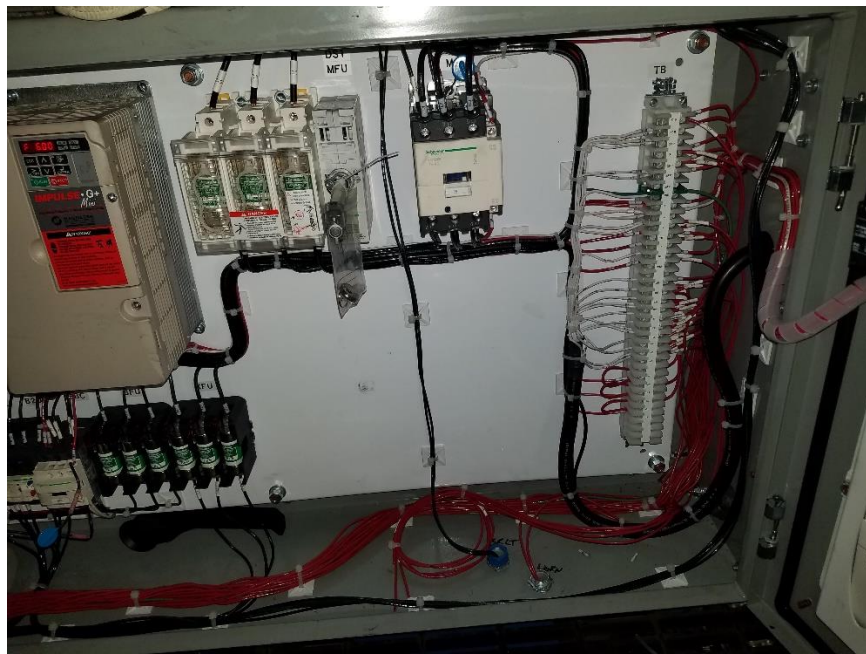
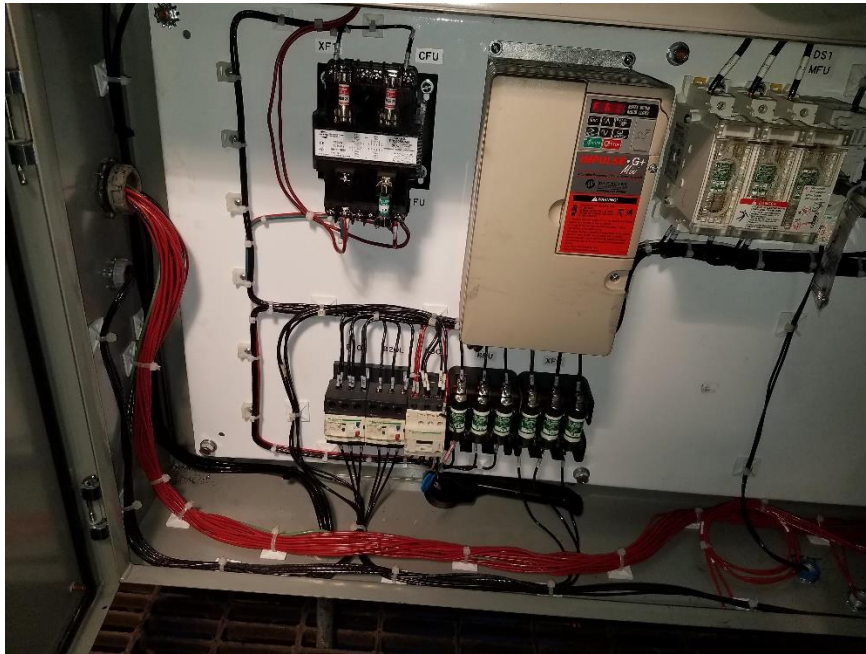
Bridge Drive System





Controls





With best regards,
Simmers Crane Design and Services Co.



SIMMERS

CRANE DESIGN & SERVICES
— A FLATIRON CRANE OPERATING COMPANY —

1134 SALEM PARKWAY
SALEM, OHIO 44460

—CRANE & HOIST PARTS—

- PARTS FOR ALL MANUFACTURERS
- QUICK RESPONSE TIME
- REPAIR/REBUILD OF EXISTING EQUIPMENT
- RELIABLE & CONVENIENT SERVICE
- REVERSE ENGINEERING OF EXISTING PARTS/EQUIPMENT
- DISCOUNTED PRICING

—SEND YOUR REQUESTS TODAY—

one of our in-house parts specialists is awaiting your request

parts@simmerscrane.com
330-332-3300 DIAL 3

A few of our partners...

